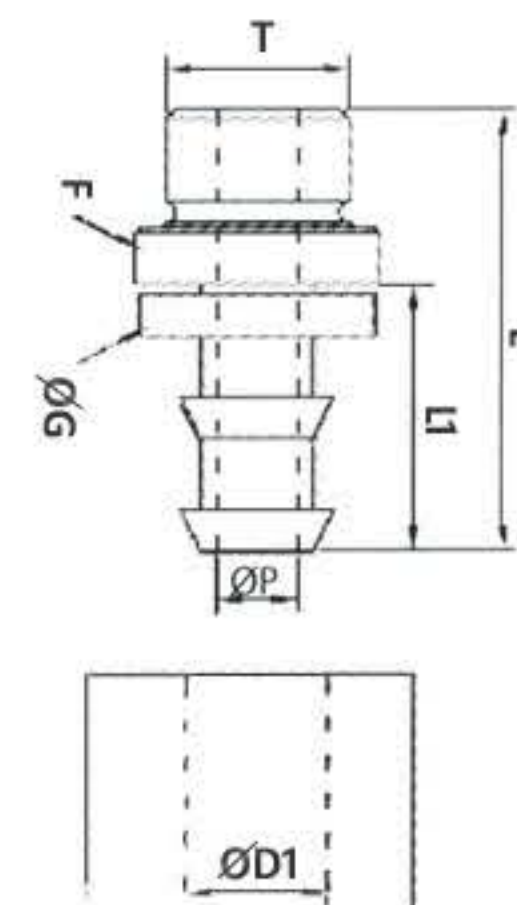


Art. 3467



Portagomma maschio cilindrico in ottone per tubo autoserrante

| CODE | T | Ø D1 | DN | L | L1 | F | Ø G | Ø P | Peso Weight (g) |
|------------|-------|--------------|------|------|------|----|------|------|-----------------|
| 3467TR1814 | G1/8" | 1/4"(6,3mm) | 1/4" | 31,5 | 20,0 | 13 | 14,0 | 4,8 | 14,0 |
| 3467TR1414 | G1/4" | 1/4"(6,3mm) | 1/4" | 35,0 | 20,0 | 17 | 14,0 | 4,8 | 26,0 |
| 3467TR1438 | G1/4" | 3/8"(9,5mm) | 3/8" | 39,1 | 24,1 | 17 | 17,0 | 7,5 | 27,0 |
| 3467TR3838 | G3/8" | 3/8"(9,5mm) | 3/8" | 42,5 | 24,1 | 22 | 17,0 | 7,5 | 47,0 |
| 3467TR3812 | G3/8" | 1/2"(12,7mm) | 1/2" | 46,5 | 28,0 | 22 | 20,5 | 10,0 | 48,0 |
| 3467TR1212 | G1/2" | 1/2"(12,7mm) | 1/2" | 48,5 | 28,0 | 27 | 20,5 | 10,0 | 79,0 |
| 3467TR1258 | G1/2" | 5/8"(15,9mm) | 5/8" | 56,5 | 36,5 | 27 | 24,0 | 13,5 | 73,0 |
| 3467TR3458 | G3/4" | 5/8"(15,9mm) | 5/8" | 58,5 | 36,5 | 32 | 24,0 | 13,5 | 117,0 |
| 3467TR3434 | G3/4" | 3/4"(19,1mm) | 3/4" | 65,3 | 43,0 | 32 | 27,0 | 16,0 | 123,0 |

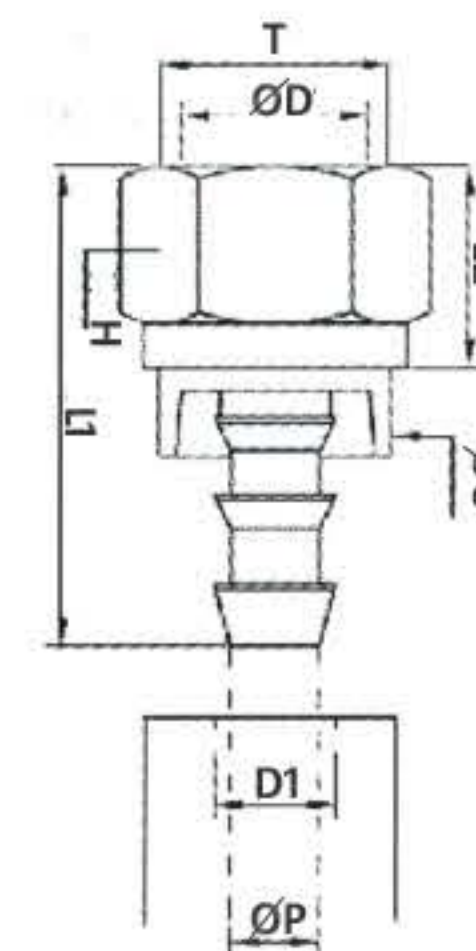


Art. 3468



Portagomma femmina metrico in ottone per tubo autoserrante

| CODE | DN | T | Ø D1 | DN | L1 | L2 | Ø C | E | Ø P | Peso Weight(g) |
|-------------|----|---------|--------------|------|------|------|------|------|------|----------------|
| 3468TRM1014 | 6 | M10X1 | 1/4"(6,3mm) | 1/4" | 33,5 | 11,0 | 16,5 | 13,0 | 4,8 | 17,0 |
| 3468TRM1214 | 8 | M12X1 | 1/4"(6,3mm) | 1/4" | 34,5 | 13,0 | 16,5 | 14,0 | 4,8 | 18,0 |
| 3468TRM1614 | 10 | M16X1,5 | 1/4"(6,3mm) | 1/4" | 35,8 | 15,0 | 16,5 | 19,0 | 4,8 | 33,0 |
| 3468TRM1638 | 10 | M16X1,5 | 3/8"(9,5mm) | 3/8" | 39,3 | 15,0 | 19,5 | 19,0 | 7,5 | 35,0 |
| 3468TRM2038 | 14 | M20X1,5 | 3/8"(9,5mm) | 3/8" | 39,3 | 15,0 | 19,5 | 24,0 | 7,5 | 52,0 |
| 3468TRM2012 | 14 | M20X1,5 | 1/2"(12,7mm) | 1/2" | 44,0 | 15,0 | 23,5 | 24,0 | 10,0 | 56,0 |
| 3468TRM2212 | 15 | M22X1,5 | 1/2"(12,7mm) | 1/2" | 45,0 | 17,0 | 23,5 | 27,0 | 10,0 | 77,0 |
| 3468TRM2412 | 16 | M24X1,5 | 1/2"(12,7mm) | 1/2" | 47,0 | 18,0 | 23,5 | 30,0 | 10,0 | 99,0 |
| 3468TRM2458 | 16 | M24X1,5 | 5/8"(15,9mm) | 5/8" | 55,0 | 18,0 | 27,0 | 30,0 | 13,5 | 97,0 |
| 3468TRM3034 | 22 | M30X1,5 | 3/4"(19,1mm) | 3/4" | 62,0 | 18,5 | 30,0 | 36,0 | 16,0 | 137,0 |

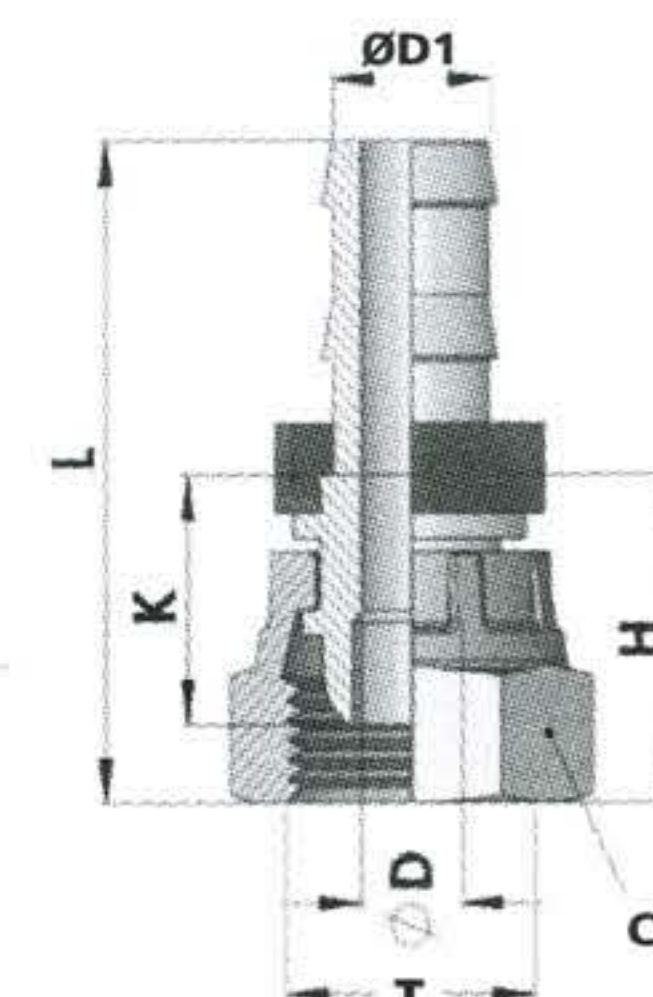


Art. 3470



Femmina dritta con sede svasata 60° in acciaio per tubo autoserrante

| CODE | T | D1 | DN | CH | L | H | K | Ø D |
|----------|-------|------|----|----|------|------|------|------|
| 3470TR14 | G1/4" | 1/4" | 6 | 19 | 37,2 | 17,9 | 13,2 | 4,0 |
| 3470TR38 | G3/8" | 3/8" | 10 | 20 | 44,2 | 21,7 | 14,2 | 7,0 |
| 3470TR12 | G1/2" | 1/2" | 13 | 27 | 51,5 | 28,5 | 22,5 | 9,5 |
| 3470TR34 | G3/4" | 3/4" | 19 | 32 | 68,2 | 39,2 | 27,6 | 14,5 |
| 3470TR1 | G1" | 1" | 25 | 41 | 74,0 | 38,4 | 28,4 | 20,0 |

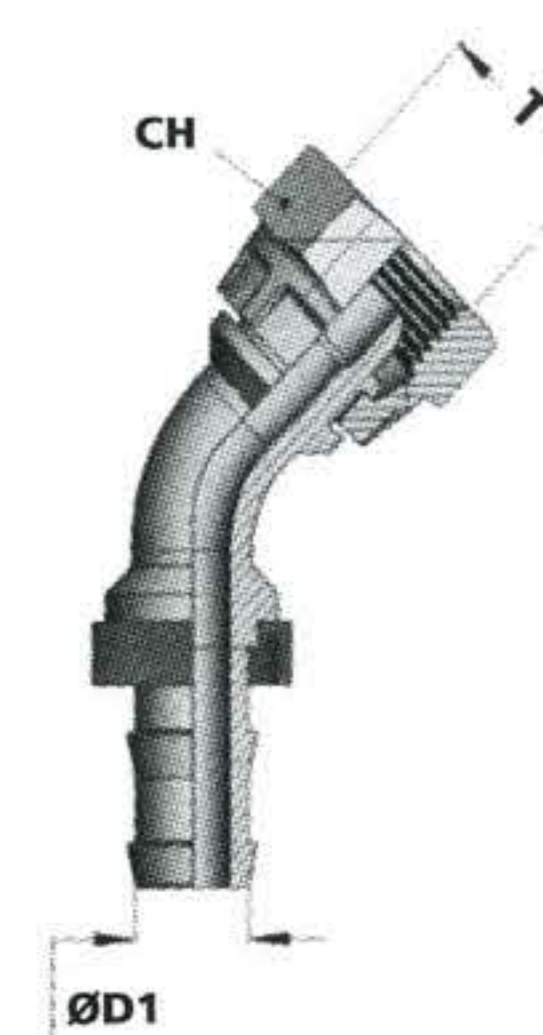


Art. 3471



Curva 45° con sede svasata 60° in acciaio per tubo autoserrante

| CODE | T | D1 | DN | CH |
|------|-------|------|----|----|
| TR14 | G1/4" | 1/4" | 6 | 19 |
| TR38 | G3/8" | 3/8" | 10 | 22 |
| TR12 | G1/2" | 1/2" | 13 | 27 |
| TR34 | G3/4" | 3/4" | 19 | 32 |
| TR1 | G1" | 1" | 25 | 46 |



Art. 3472



Curva 90° con sede svasata 60° in acciaio per tubo autoserrante

| CODE | T | D1 | DN | CH | L |
|----------|-------|------|----|----|----|
| 3472TR14 | G1/4" | 1/4" | 6 | 19 | 19 |
| 3472TR38 | G3/8" | 3/8" | 10 | 22 | 22 |
| 3472TR12 | G1/2" | 1/2" | 13 | 27 | 27 |
| 3472TR34 | G3/4" | 3/4" | 19 | 32 | 32 |
| 3472TR1 | G1" | 1" | 25 | 40 | 40 |

